

smart: YES flush: NO  
restraint: none

LEFT ← → RIGHT

Connection Table		
A	HEEL_HS	SC-HEEL-HS-F-90-75-1
B	HEEL	SC-HEEL-A-90-75-2
C	KNEE	SC-KNEE-A-90-75-2
D	APEX_HS	SC-APEX-HS-F-90-75-1

ANALYSIS		QTY
Status	PASS	1
Approved BY		

Chord - Web Connections

040-3

Part Id  
Total no. fasteners at each end of the web

Connection type:  
(Apex,knee,heel,elbow,chordpt)

SC-HEEL-A-75-10-6

Truss system:  
ENDUROTRUSS (c)  
C profile

Channel depth:  
Depth of channel -section in mm

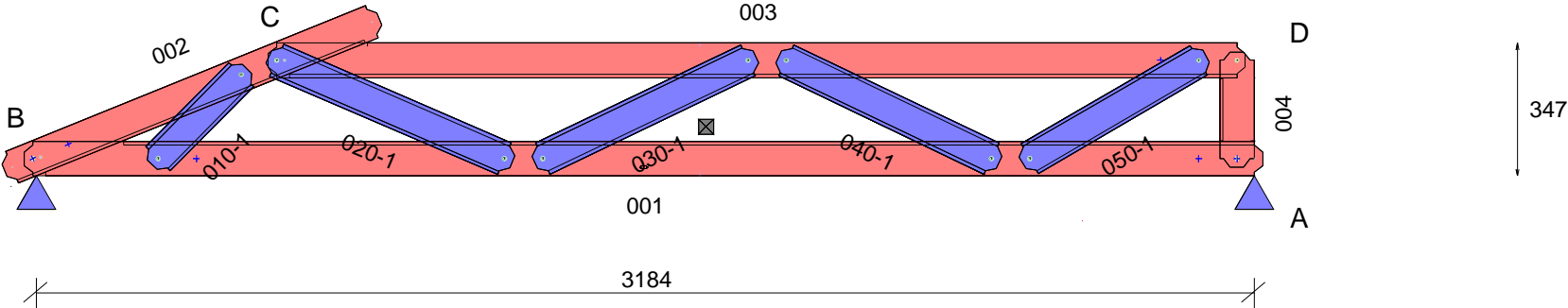
A

Connection variant:  
(A is heel with no stiffener)

Fastener number:  
Total number of fasteners used in the connection including locating truss screw and reinforcing screws

6

Channel gauge:  
(75 = 0.75 mm BMT  
10 = 1.0 mm BMT etc)



QUALITY CHECK: Top of TOP CHORD to Bottom of BOTTOM CHORD: 347  
Chords placed flange-DOWN, Webs placed flange-UP.  
Min screws per conn: 1 ( Screw locations diagrammatic only. Refer connection sheet for details.)

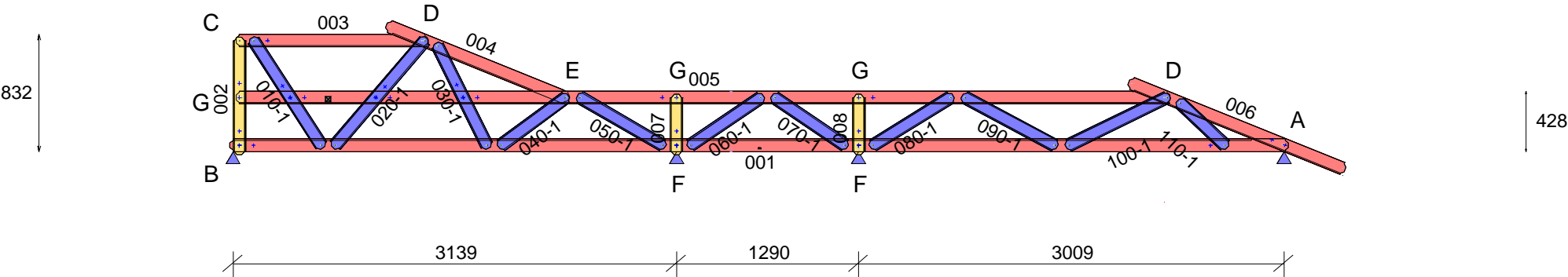
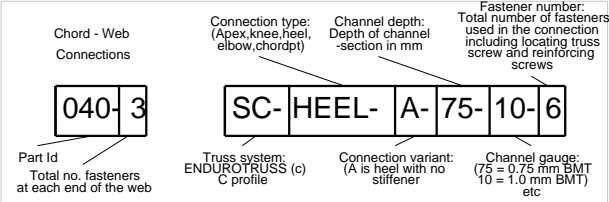
PARTS LIST (per truss)					ASSEMBLY DETAILS			TRUSS DETAILS			
DESCRIPTION	No.	LEN	MAT	QTY	APEX HEIGHT	LEFT PITCH	RIGHT PITCH	UNCROPPED LENGTH	UNCROPPED HEIGHT	WEIGHT	
C9075ra	001	3236.7	0.75	1	N/A	22 deg	-	3306	480	10.9	
C9075ra	002	1057.4	0.75	1							
C9075ra	003	2554.5	0.75	1	Precamber = 0.0 mm			DETAILER	DETAILED	SCALE	
C9075ra	004	301.5	0.75	1				Jarrold	16-07-2019	1:20	
C9075ra	010	353.1	0.75	1				JOB NUMBER		TRUSS	
C9075ra	020	692.7	0.75	1				TSF_4262		T001	
C9075ra	030	639.3	0.75	1	FABRICATOR:	TRUE STEEL FRAMES					
C9075ra	040	639.3	0.75	1	CLIENT REF:	DW2 14 BAKER AVE MORPHETTVILLE		Machine Type	ENDUROTRUSS		
C9075ra	050	555.3	0.75	1	CUSTOMER :	BERT FARINA CONSTRUCTIONS					
TRUSSTITE				13							
SCREW-12-14x20-HEX				2						Page 1 of 1	

smart: YES    flush: NO  
restraint: none

LEFT    RIGHT

Connection Table		
A	HEEL	SC-HEEL-A-90-75-2
B	HEEL_HS	SC-HEEL-HS-90-75-1
C	APEX_HS	SC-APEX-HS-90-75-1
D	KNEE	SC-KNEE-A-90-75-2
E	CHORDPT	SC-CHORDPT-A-90-75-2
F	CHORDPT	SC-CHORDPT-S-90-75-2
G	CHORDPT	SC-CHORDPT-B-90-75-2

ANALYSIS		QTY
Status	PASS	1
Approved BY		

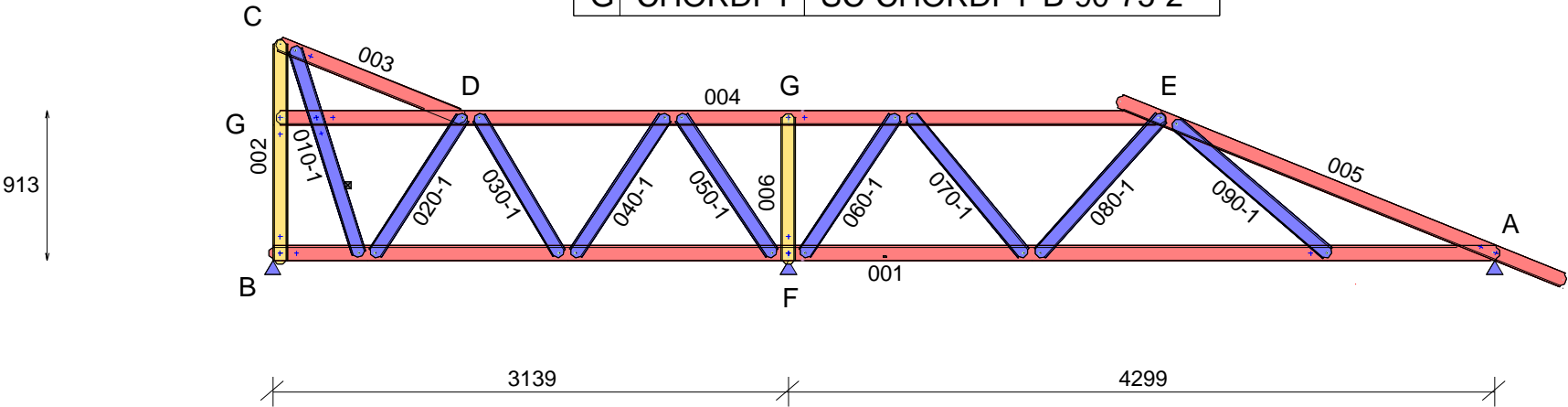
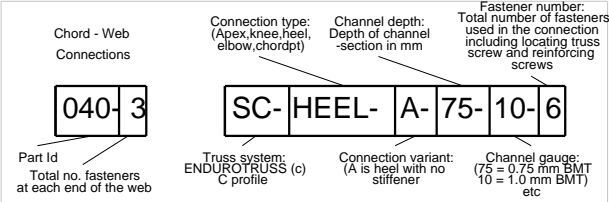


smart: YES flush: NO  
restraint: none

LEFT ← → RIGHT

Connection Table		
A	HEEL	SC-HEEL-A-90-75-2
B	HEEL_HS	SC-HEEL-HS-90-75-1
C	APEX_HS	SC-APEX-HS-90-75-1
D	CHORDPT	SC-CHORDPT-A-90-75-2
E	KNEE	SC-KNEE-A-90-75-2
F	CHORDPT	SC-CHORDPT-S-90-75-2
G	CHORDPT	SC-CHORDPT-B-90-75-2

ANALYSIS		QTY
Status	PASS	1
Approved BY		



QUALITY CHECK: Top of TOP CHORD to Bottom of BOTTOM CHORD: 913  
Chords placed flange-DOWN, Webs placed flange-UP.  
Min screws per conn: 1 ( Screw locations diagrammatic only. Refer connection sheet for details.)

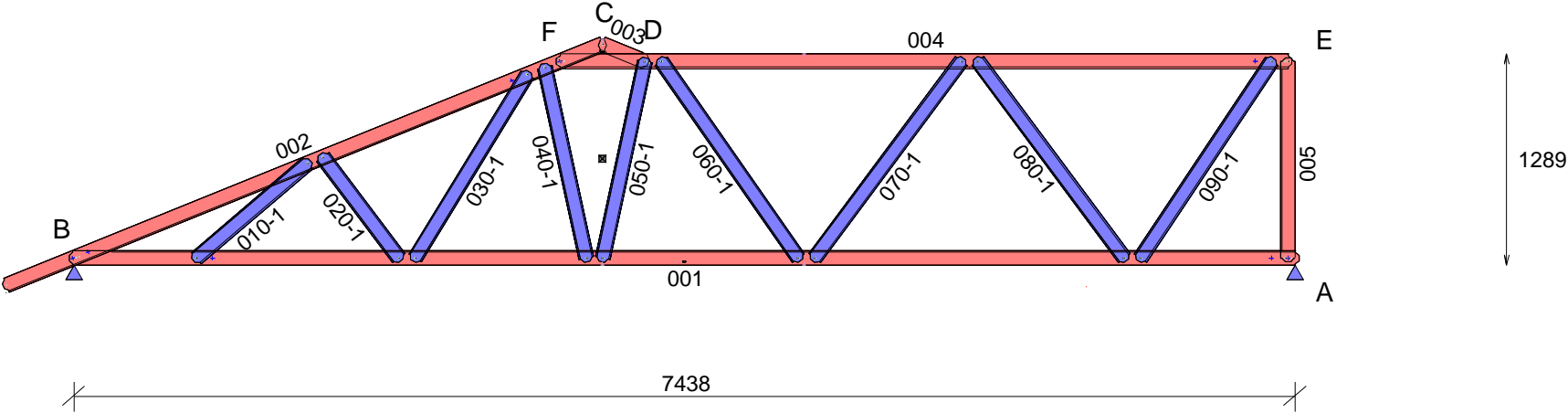
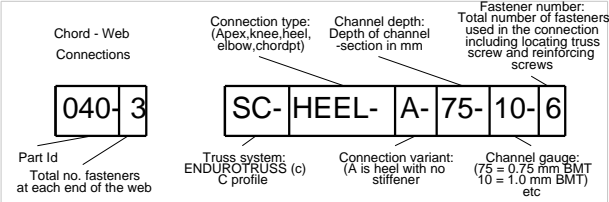
PARTS LIST (per truss)										ASSEMBLY DETAILS			TRUSS DETAILS				
DESCRIPTION	No.	LEN	MAT	QTY	DESCRIPTION	No.	LEN	MAT	QTY	APEX HEIGHT	LEFT PITCH	RIGHT PITCH	UNCROPPED LENGTH	UNCROPPED HEIGHT	WEIGHT		
C9075ra	001	7490.7	0.75	1	C9075ra	060	1033.9	0.75	1	N/A	-	22 deg	7910	1535	31.9		
C9075ra	002	1360.8	0.75	1	C9075ra	070	1112.2	0.75	1				Precamber = 0.0 mm	DETAILER	DETAILED	SCALE	
C9075ra	003	1241.7	0.75	1	C9075ra	080	1150.6	0.75	1	Jarrold	16-07-2019	1:45					
C9075ra	004	5408.5	0.75	1	C9075ra	090	1251.6	0.75	1	JOB NUMBER		TRUSS					
C9075ra	005	2944.8	0.75	1	TRUSSTITE				25	TSF_4262		T003					
C9075ra	006	912.1	0.75	1	SCREW-12-14x20-HEX				6	Machine Type		ENDUROTRUSS					
C9075ra	010	1337.2	0.75	1						FABRICATOR:	TRUE STEEL FRAMES						
C9075ra	020	1024.1	0.75	1						CLIENT REF:	DW2 14 BAKER AVE MORPHETTVILLE						
C9075ra	030	1000.6	0.75	1											CUSTOMER :	BERT FARINA CONSTRUCTIONS	
C9075ra	040	1031.8	0.75	1													
C9075ra	050	1033.9	0.75	1								Page 1 of 1					

smart: YES flush: NO  
restraint: none

LEFT ← → RIGHT

Connection Table		
A	HEEL_HS	SC-HEEL-HS-F-90-75-3
B	HEEL	SC-HEEL-A-90-75-3
C	APEX	SC-APEX-A-90-75-1
D	CHORDPT	SC-CHORDPT-A-90-75-2
E	APEX_HS	SC-APEX-HS-F-90-75-3
F	CHORDPT	SC-CHORDPT-A-90-75-4

ANALYSIS		QTY
Status	PASS	1
Approved BY		



QUALITY CHECK: Top of TOP CHORD to Bottom of BOTTOM CHORD: 1288

Chords placed flange-DOWN, Webs placed flange-UP.

Min screws per conn: 1 ( Screw locations diagrammatic only. Refer connection sheet for details.)

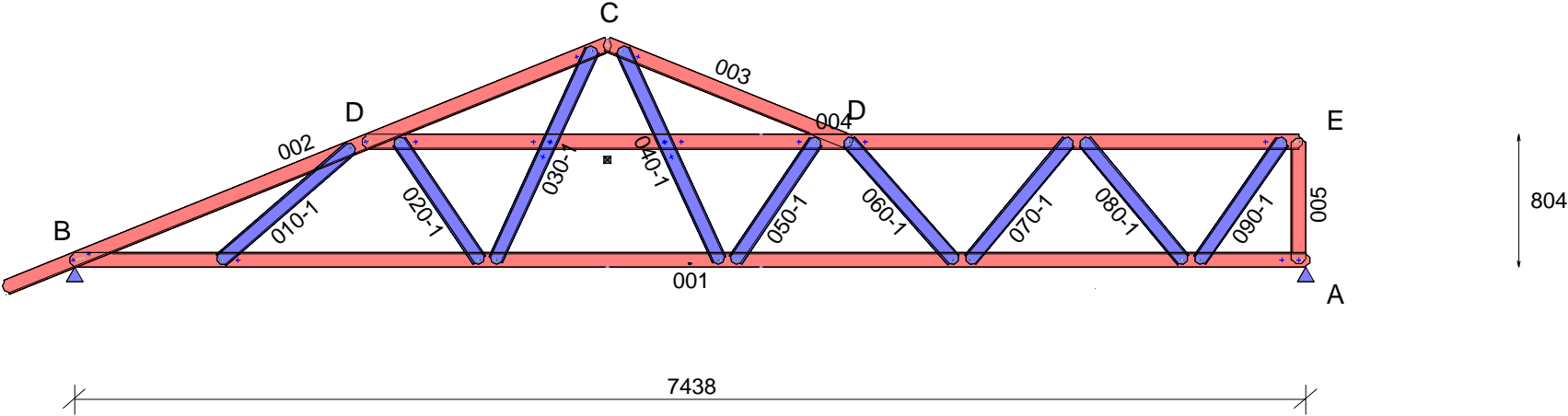
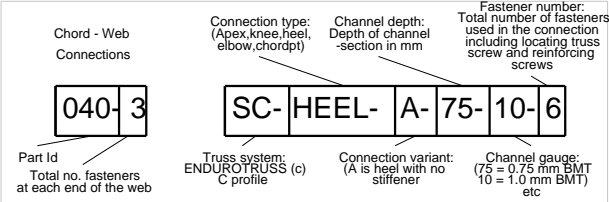
PARTS LIST (per truss)										ASSEMBLY DETAILS			TRUSS DETAILS						
DESCRIPTION	No.	LEN	MAT	QTY	DESCRIPTION	No.	LEN	MAT	QTY	APEX HEIGHT	LEFT PITCH	RIGHT PITCH	UNCROPPED LENGTH	UNCROPPED HEIGHT	WEIGHT				
C9075ra	001	7490.7	0.75	1	C9075ra	070	1538	0.75	1	1376	22 deg	22 deg	7910	1566	31.7				
C9075ra	002	3958.8	0.75	1	C9075ra	080	1538.4	0.75	1	Precamber = 1.0 mm			DETAILER	DETAILED	SCALE				
C9075ra	003	322.8	0.75	1	C9075ra	090	1483.7	0.75	1				Jarrold	16-07-2019	1:45				
C9075ra	004	4478.5	0.75	1	TRUSSTITE				23				JOB NUMBER		TRUSS				
C9075ra	005	1242.8	0.75	1	SCREW-12-14x20-HEX				10				TSF_4262		T004				
C9075ra	010	934.8	0.75	1						FABRICATOR:	TRUE STEEL FRAMES								
C9075ra	020	813.1	0.75	1						CLIENT REF:	DW2 14 BAKER AVE MORPHETTVILLE		Machine Type		ENDUROTRUSS				
C9075ra	030	1352.6	0.75	1						CUSTOMER :	BERT FARINA CONSTRUCTIONS								
C9075ra	040	1231.6	0.75	1															
C9075ra	050	1269.2	0.75	1															
C9075ra	060	1503.7	0.75	1											Page 1 of 1				

smart: YES flush: NO  
restraint: none

LEFT ← → RIGHT

ANALYSIS		QTY
Status	PASS	1
Approved BY		

Connection Table		
A	HEEL_HS	SC-HEEL-HS-F-90-75-3
B	HEEL	SC-HEEL-A-90-75-4
C	APEX	SC-APEX-A-90-75-1
D	CHORDPT	SC-CHORDPT-A-90-75-2
E	APEX_HS	SC-APEX-HS-F-90-75-3



QUALITY CHECK: Top of TOP CHORD to Bottom of BOTTOM CHORD: 803  
Chords placed flange-DOWN, Webs placed flange-UP.  
Min screws per conn: 1 ( Screw locations diagrammatic only. Refer connection sheet for details.)

PARTS LIST (per truss)										ASSEMBLY DETAILS			TRUSS DETAILS		
DESCRIPTION	No.	LEN	MAT	QTY	DESCRIPTION	No.	LEN	MAT	QTY	APEX HEIGHT	LEFT PITCH	RIGHT PITCH	UNCROPPED LENGTH	UNCROPPED HEIGHT	WEIGHT
C9075ra	001	7490.7	0.75	1	C9075ra	070	971.4	0.75	1	1376	22 deg	22 deg	7910	1566	31.6
C9075ra	002	3958.8	0.75	1	C9075ra	080	971.8	0.75	1				Precamber = 1.0 mm	DETAILER	DETAILED
C9075ra	003	1617	0.75	1	C9075ra	090	914.2	0.75	1	Jarrold	16-07-2019	1:45			
C9075ra	004	5678.5	0.75	1	TRUSSTITE				25	JOB NUMBER		TRUSS			
C9075ra	005	758	0.75	1	SCREW-12-14x20-HEX				9	TSF_4262		T005			
C9075ra	010	1077.9	0.75	1						FABRICATOR:	TRUE STEEL FRAMES			Machine Type	
C9075ra	020	905.7	0.75	1						CLIENT REF:	DW2 14 BAKER AVE MORPHETTVILLE			ENDUROTRUSS	
C9075ra	030	1436.5	0.75	1						CUSTOMER :	BERT FARINA CONSTRUCTIONS				
C9075ra	040	1436.4	0.75	1											
C9075ra	050	905.6	0.75	1											
C9075ra	060	998.3	0.75	1											

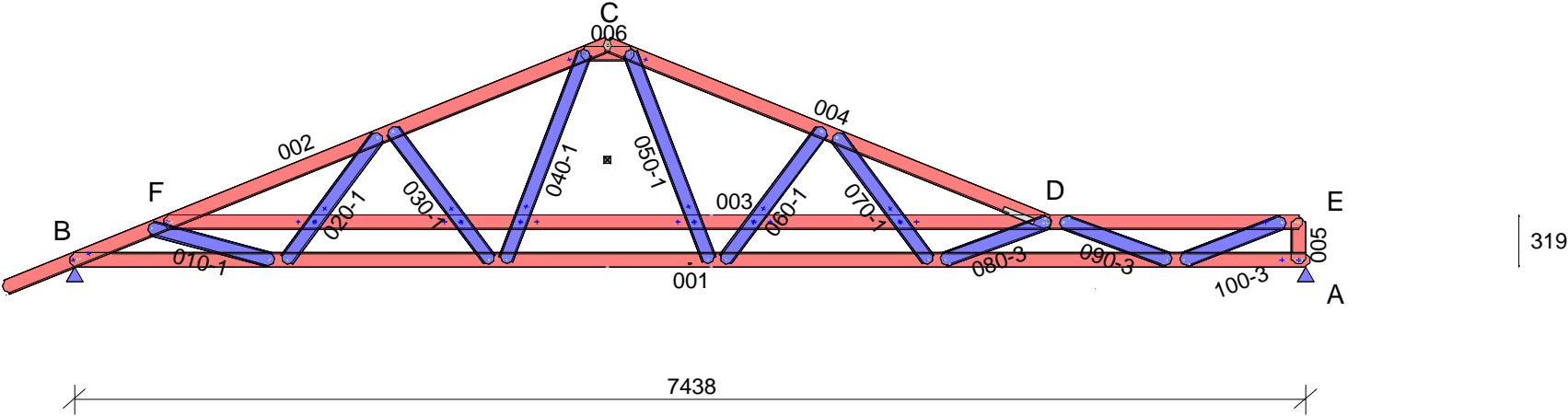
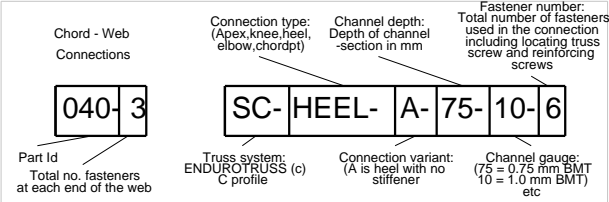
Page 1 of 1

smart: YES flush: NO  
restraint: none

LEFT ← → RIGHT

Connection Table		
A	HEEL_HS	SC-HEEL-HS-F-90-75-3
B	HEEL	SC-HEEL-A-90-75-3
C	APEX	SC-APEX-E1-90-75-12
D	CHORDPT	SC-CHORDPT-C-90-75-6
E	APEX_HS	SC-APEX-HS-F-90-75-3
F	CHORDPT	SC-CHORDPT-A-90-75-2

ANALYSIS		QTY
Status	PASS	1
Approved BY		



QUALITY CHECK: Top of TOP CHORD to Bottom of BOTTOM CHORD: 315

Chords placed flange-DOWN, Webs placed flange-UP.

Min screws per conn: 1 ( Screw locations diagrammatic only. Refer connection sheet for details.)

PARTS LIST (per truss)										ASSEMBLY DETAILS			TRUSS DETAILS		
DESCRIPTION	No.	LEN	MAT	QTY	DESCRIPTION	No.	LEN	MAT	QTY	APEX HEIGHT	LEFT PITCH	RIGHT PITCH	UNCROPPED LENGTH	UNCROPPED HEIGHT	WEIGHT
C9075ra	001	7490.7	0.75	1	C9075ra	060	1014.7	0.75	1	1373	22 deg	22 deg	7910	1566	34.3
C9075ra	002	3958.8	0.75	1	C9075ra	070	965	0.75	1	Precamber = 4.0 mm			DETAILER	DETAILED	SCALE
C9075ra	003	6878.5	0.75	1	C9075ra	080	705.1	0.75	1				Jarrold	16-07-2019	1:45
C9075ra	004	2911.3	0.75	1	C9075ra	090	711	0.75	1				JOB NUMBER		TRUSS
C9075ra	005	273.2	0.75	1	C9075ra	100	677.1	0.75	1				TSF_4262		T006
C9075ra	006	319	0.75	1	TRUSSTITE				31				Machine Type		ENDUROTRUSS
C9075ra	010	782.7	0.75	1	SCREW-12-14x20-HEX				35	FABRICATOR:	TRUE STEEL FRAMES		Page 1 of 1		
C9075ra	020	965.8	0.75	1	ANG-35x35x1.0-200				1	CLIENT REF:	DW2 14 BAKER AVE MORPHETTVILLE				
C9075ra	030	1015	0.75	1					CUSTOMER :	BERT FARINA CONSTRUCTIONS					
C9075ra	040	1375.8	0.75	1											
C9075ra	050	1375.5	0.75	1											

smart: YES flush: NO  
restraint: none

LEFT ← → RIGHT

ANALYSIS		QTY
Status	PASS	1
Approved BY		

Chord - Web Connections

040-3

Part Id  
Total no. fasteners at each end of the web

Connection type: (Apex,knee,heel,elbow,chordpt)

SC-HEEL-A-75-10-6

Truss system: ENDUROTRUSS (c) C profile

Channel depth: Depth of channel -section in mm

75

Connection variant: (A is heel with no stiffener)

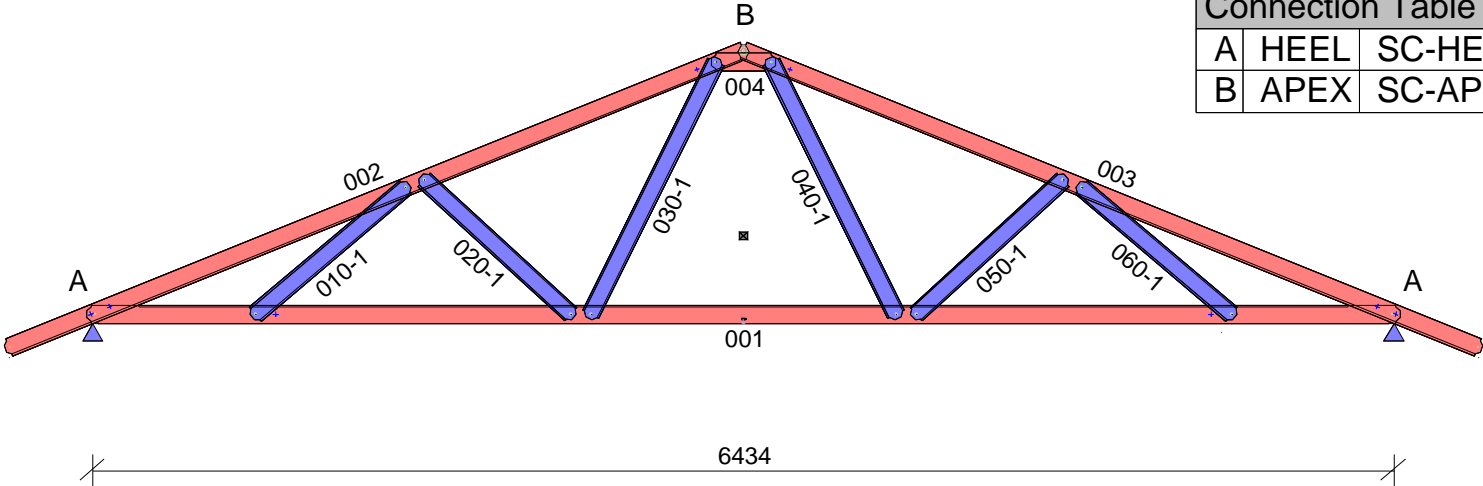
10

Fastener number: Total number of fasteners used in the connection including locating truss screw and reinforcing screws

6

Channel gauge: (75 = 0.75 mm BMT 10 = 1.0 mm BMT) etc

Connection Table		
A	HEEL	SC-HEEL-A-90-75-2
B	APEX	SC-APEX-E1-90-75-10



Chords placed flange-DOWN, Webs placed flange-UP.  
Min screws per conn: 1 ( Screw locations diagrammatic only. Refer connection sheet for details.)

PARTS LIST (per truss)										ASSEMBLY DETAILS			TRUSS DETAILS						
DESCRIPTION	No.	LEN	MAT	QTY	DESCRIPTION	No.	LEN	MAT	QTY	APEX HEIGHT	LEFT PITCH	RIGHT PITCH	UNCROPPED LENGTH	UNCROPPED HEIGHT	WEIGHT				
C9075ra	001	6495.5	0.75	1	SCREW-12-14x20-HEX				11	1376	22 deg	22 deg	7334	1566	23.5				
C9075ra	002	3958.8	0.75	1	Precamber = 1.0 mm														
C9075ra	003	3958.8	0.75	1							DETAILER			DETAILED		SCALE			
C9075ra	004	319	0.75	1							Jarrod			16-07-2019		1:40			
C9075ra	010	1015	0.75	1							JOB NUMBER			TRUSS					
C9075ra	020	1027.2	0.75	1							TSF_4262			T007					
C9075ra	030	1435	0.75	1							Machine Type			ENDUROTRUSS					
C9075ra	040	1435	0.75	1							CUSTOMER : BERT FARINA CONSTRUCTIONS								
C9075ra	050	1027.2	0.75	1															
C9075ra	060	1015	0.75	1															
TRUSSTITE				15											Page 1 of 1				

10.00.08 TRUSS-T007-16-07-2019-13:01:27 TrussBuilder Vers 1.2-17 G3=22



smart: YES flush: NO  
restraint: none

LEFT ← → RIGHT

ANALYSIS		QTY
Status	PASS	6
Approved BY		

Chord - Web Connections

040-3

Part Id  
Total no. fasteners at each end of the web

Connection type: (Apex,knee,heel,elbow,chordpt)

SC-HEEL-A-75-10-6

Truss system: ENDUROTRUSS (c) C profile

Channel depth: Depth of channel -section in mm

A-75-10-6

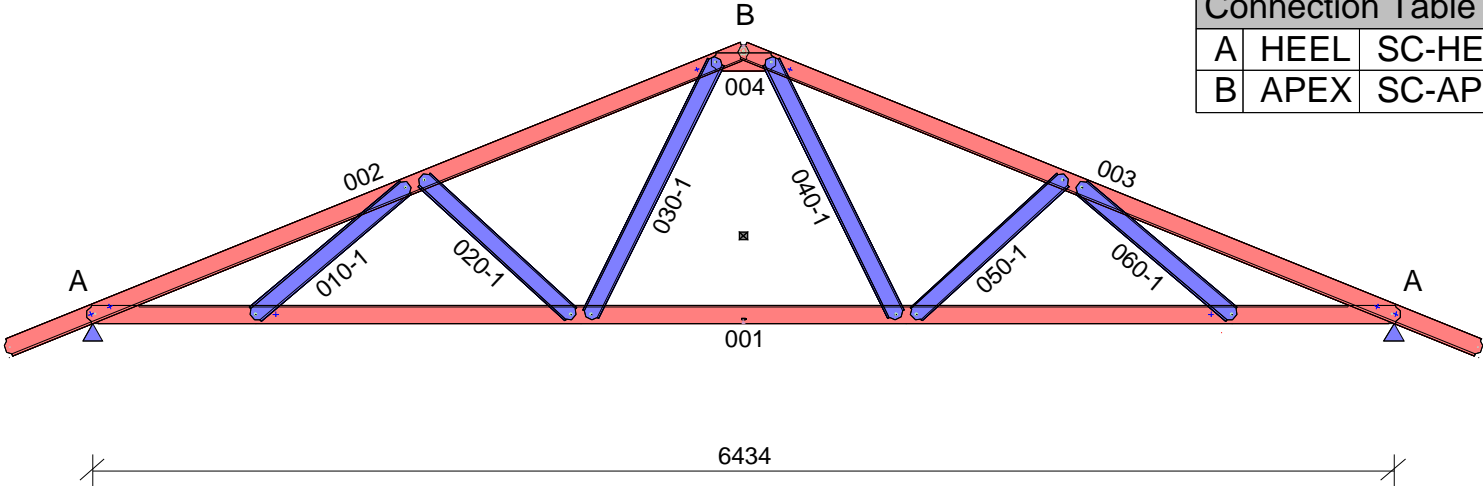
Connection variant: (A is heel with no stiffener)

Fastener number: Total number of fasteners used in the connection including locating truss screw and reinforcing screws

10-6

Channel gauge: (75 = 0.75 mm BMT 10 = 1.0 mm BMT) etc

Connection Table		
A	HEEL	SC-HEEL-A-90-75-2
B	APEX	SC-APEX-E1-90-75-10



Chords placed flange-DOWN, Webs placed flange-UP.  
Min screws per conn: 1 ( Screw locations diagrammatic only. Refer connection sheet for details.)

PARTS LIST (per truss)										ASSEMBLY DETAILS			TRUSS DETAILS						
DESCRIPTION	No.	LEN	MAT	QTY	DESCRIPTION	No.	LEN	MAT	QTY	APEX HEIGHT	LEFT PITCH	RIGHT PITCH	UNCROPPED LENGTH	UNCROPPED HEIGHT	WEIGHT				
C9075ra	001	6495.5	0.75	1	SCREW-12-14x20-HEX				11	1376	22 deg	22 deg	7334	1566	23.5				
C9075ra	002	3958.8	0.75	1	Precamber = 1.0 mm								DETAILER	DETAILED	SCALE				
C9075ra	003	3958.8	0.75	1									Jarrold	16-07-2019	1:40				
C9075ra	004	319	0.75	1									JOB NUMBER		TRUSS				
C9075ra	010	1015	0.75	1						FABRICATOR:		TRUE STEEL FRAMES	TSF_4262		T008				
C9075ra	020	1027.2	0.75	1						CLIENT REF:		DW2 14 BAKER AVE MORPHETTVILLE	Machine Type						
C9075ra	030	1435	0.75	1						CUSTOMER :		BERT FARINA CONSTRUCTIONS				Page 1 of 1			
C9075ra	040	1435	0.75	1															
C9075ra	050	1027.2	0.75	1															
C9075ra	060	1015	0.75	1															
TRUSSTITE				15															



Loading: USER-W34N(m,6,-0.1,-0.09,-0.25,0,0,0,0,0,0,-1.1,-1.1,0,900,0,0,0,0,0,600,0,0,A,1,1,1,1,1,,N1,,,,,5000,S,3600,,SEALED,)

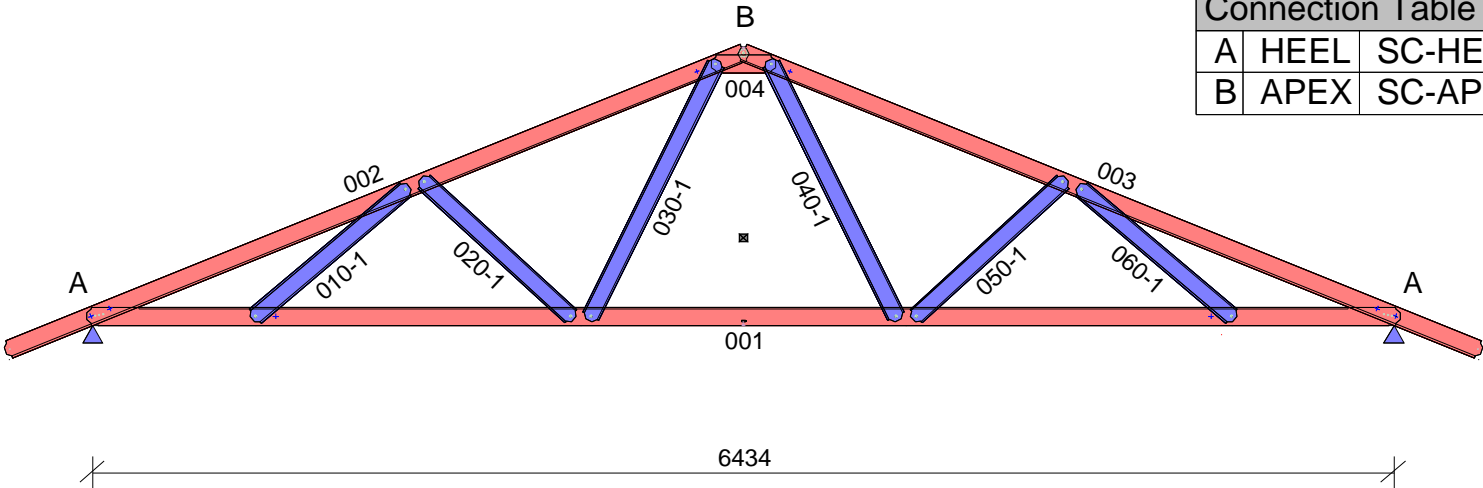
smart: YES flush: NO  
restraint: none

LEFT ← → RIGHT

ANALYSIS		QTY
Status	PASS	2
Approved BY		

Chord - Web Connections	Connection type: (Apex,knee,heel, elbow,chordpt)	Channel depth: Depth of channel -section in mm	Fastener number: Total number of fasteners used in the connection including locating truss screw and reinforcing screws
040-3	SC-HEEL-A-75-10-6		
Part Id Total no. fasteners at each end of the web	Truss system: ENDUROTRUSS (c) C profile	Connection variant: (A is heel with no stiffener)	Channel gauge: (75 = 0.75 mm BMT 10 = 1.0 mm BMT) etc

Connection Table		
A	HEEL	SC-HEEL-A-90-75-4
B	APEX	SC-APEX-E1-90-75-10



Chords placed flange-DOWN, Webs placed flange-UP.  
Min screws per conn: 1 ( Screw locations diagrammatic only. Refer connection sheet for details.)

PARTS LIST (per truss)										ASSEMBLY DETAILS			TRUSS DETAILS					
DESCRIPTION	No.	LEN	MAT	QTY	DESCRIPTION	No.	LEN	MAT	QTY	APEX HEIGHT	LEFT PITCH	RIGHT PITCH	UNCROPPED LENGTH	UNCROPPED HEIGHT	WEIGHT			
C9075ra	001	6495.5	0.75	1	SCREW-12-14x20-HEX				15	1376	22 deg	22 deg	7334	1566	23.5			
C9075ra	002	3958.8	0.75	1	Precamber = 1.0 mm								DETAILER	DETAILED	SCALE			
C9075ra	003	3958.8	0.75	1									Jarrold	16-07-2019	1:40			
C9075ra	004	319	0.75	1									JOB NUMBER		TRUSS			
C9075ra	010	1015	0.75	1						FABRICATOR:		TRUE STEEL FRAMES	TSF_4262		T009			
C9075ra	020	1027.2	0.75	1						CLIENT REF:		DW2 14 BAKER AVE MORPHETTVILLE	Machine Type		ENDUROTRUSS			
C9075ra	030	1435	0.75	1						CUSTOMER :		BERT FARINA CONSTRUCTIONS			Page 1 of 1			
C9075ra	040	1435	0.75	1														
C9075ra	050	1027.2	0.75	1														
C9075ra	060	1015	0.75	1														
TRUSSTITE				15														

10.00.08 TRUSS-T009-16-07-2019-13:01:33 TrussBuilder Vers 1.2-17 G3=22

smart: YES flush: NO  
restraint: none

LEFT ← → RIGHT

ANALYSIS		QTY
Status	PASS	1
Approved BY		

Chord - Web Connections

040-3

Part Id  
Total no. fasteners at each end of the web

Connection type: (Apex,knee,heel,elbow,chordpt)

SC-HEEL-A-75-10-6

Truss system: ENDUROTRUSS (c)  
C profile

Channel depth: Depth of channel -section in mm

A-75-10-6

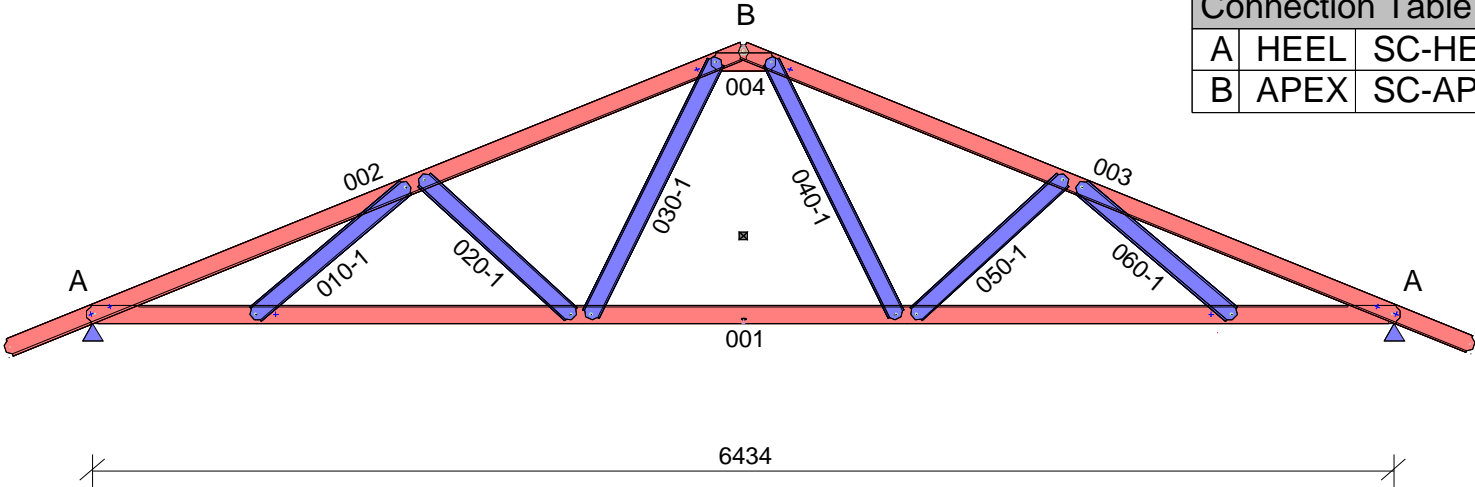
Connection variant: (A is heel with no stiffener)

Fastener number: Total number of fasteners used in the connection including locating truss screw and reinforcing screws

10-6

Channel gauge: (75 = 0.75 mm BMT 10 = 1.0 mm BMT) etc

Connection Table		
A	HEEL	SC-HEEL-A-90-75-2
B	APEX	SC-APEX-E1-90-75-10



Chords placed flange-DOWN, Webs placed flange-UP.  
Min screws per conn: 1 ( Screw locations diagrammatic only. Refer connection sheet for details.)

PARTS LIST (per truss)										ASSEMBLY DETAILS			TRUSS DETAILS		
DESCRIPTION	No.	LEN	MAT	QTY	DESCRIPTION	No.	LEN	MAT	QTY	APEX HEIGHT	LEFT PITCH	RIGHT PITCH	UNCROPPED LENGTH	UNCROPPED HEIGHT	WEIGHT
C9075ra	001	6495.5	0.75	1	SCREW-12-14x20-HEX				11	1376	22 deg	22 deg	7294	1566	23.5
C9075ra	002	3958.8	0.75	1	Precamber = 1.0 mm					DETAILER Jarrod			DETAILED 16-07-2019		
C9075ra	003	3915.7	0.75	1									SCALE 1:40		
C9075ra	004	319	0.75	1									JOB NUMBER TSF_4262		
C9075ra	010	1015	0.75	1						FABRICATOR: TRUE STEEL FRAMES			TRUSS T010		
C9075ra	020	1027.2	0.75	1						CLIENT REF: DW2 14 BAKER AVE MORPHETTVILLE			Machine Type ENDUROTRUSS		
C9075ra	030	1435	0.75	1						CUSTOMER : BERT FARINA CONSTRUCTIONS			Page 1 of 1		
C9075ra	040	1435	0.75	1											
C9075ra	050	1027.2	0.75	1											
C9075ra	060	1015	0.75	1											
TRUSSTITE				15											

smart: YES flush: NO  
restraint: none

LEFT ← → RIGHT

Connection Table		
A	HEEL	SC-HEEL-A-90-75-3
B	APEX	SC-APEX-A-90-75-1
C	CHORDPT	SC-CHORDPT-B-90-75-2
D	CHORDPT	SC-CHORDPT-A-90-75-4

ANALYSIS		QTY
Status	PASS	1
Approved BY		

Chord - Web Connections

040-3

Part Id  
Total no. fasteners at each end of the web

Connection type:  
(Apex,knee,heel,elbow,chordpt)

Channel depth:  
Depth of channel -section in mm

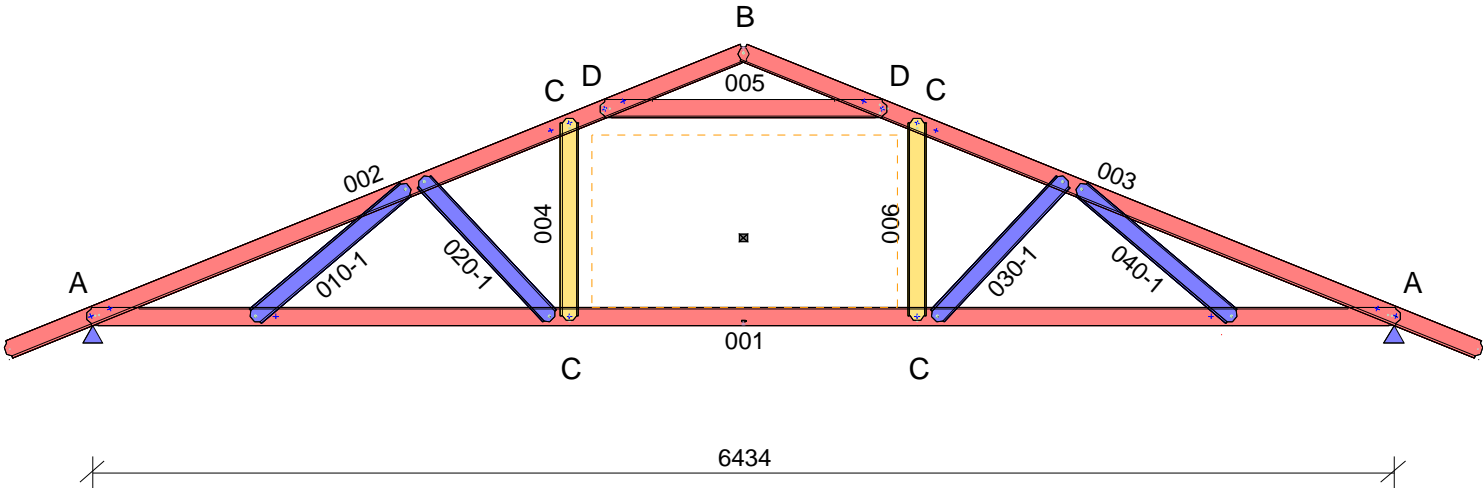
Fastener number:  
Total number of fasteners used in the connection including locating truss screw and reinforcing screws

SC-HEEL-A-75-10-6

Truss system:  
ENDUROTRUSS (c)  
C profile

Connection variant:  
(A is heel with no stiffener)

Channel gauge:  
(75 = 0.75 mm BMT  
10 = 1.0 mm BMT)  
etc



Chords placed flange-DOWN, Webs placed flange-UP.  
Min screws per conn: 1 ( Screw locations diagrammatic only. Refer connection sheet for details.)

PARTS LIST (per truss)										ASSEMBLY DETAILS			TRUSS DETAILS					
DESCRIPTION	No.	LEN	MAT	QTY	DESCRIPTION	No.	LEN	MAT	QTY	APEX HEIGHT	LEFT PITCH	RIGHT PITCH	UNCROPPED LENGTH	UNCROPPED HEIGHT	WEIGHT			
C9075ra	001	6495.5	0.75	1	SCREW-12-14x20-HEX				14	1375	22 deg	22 deg	7334	1566	23.6			
C9075ra	002	3958.8	0.75	1	Precamber = 2.0 mm								DETAILER	DETAILED	SCALE			
C9075ra	003	3958.8	0.75	1									Jarrold	16-07-2019	1:40			
C9075ra	004	998	0.75	1									JOB NUMBER		TRUSS			
C9075ra	005	1417.1	0.75	1						FABRICATOR:		TRUE STEEL FRAMES	TSF_4262		T011			
C9075ra	006	998.6	0.75	1						CLIENT REF:		DW2 14 BAKER AVE MORPHETTVILLE	Machine Type					
C9075ra	010	1014.7	0.75	1						CUSTOMER :		BERT FARINA CONSTRUCTIONS						
C9075ra	020	951.4	0.75	1											ENDUROTRUSS			
C9075ra	030	952.4	0.75	1														
C9075ra	040	1014.7	0.75	1														
TRUSSTITE				17											Page 1 of 1			

smart: YES flush: NO  
restraint: none

LEFT ← → RIGHT

Connection Table		
A	HEEL	SC-HEEL-A-90-75-3
B	APEX	SC-APEX-A-90-75-1
C	CHORDPT	SC-CHORDPT-B-90-75-2
D	CHORDPT	SC-CHORDPT-A-90-75-4

ANALYSIS		QTY
Status	PASS	1
Approved BY		

Chord - Web Connections

040-3

Part Id  
Total no. fasteners at each end of the web

Connection type:  
(Apex,knee,heel,elbow,chordpt)

Channel depth:  
Depth of channel -section in mm

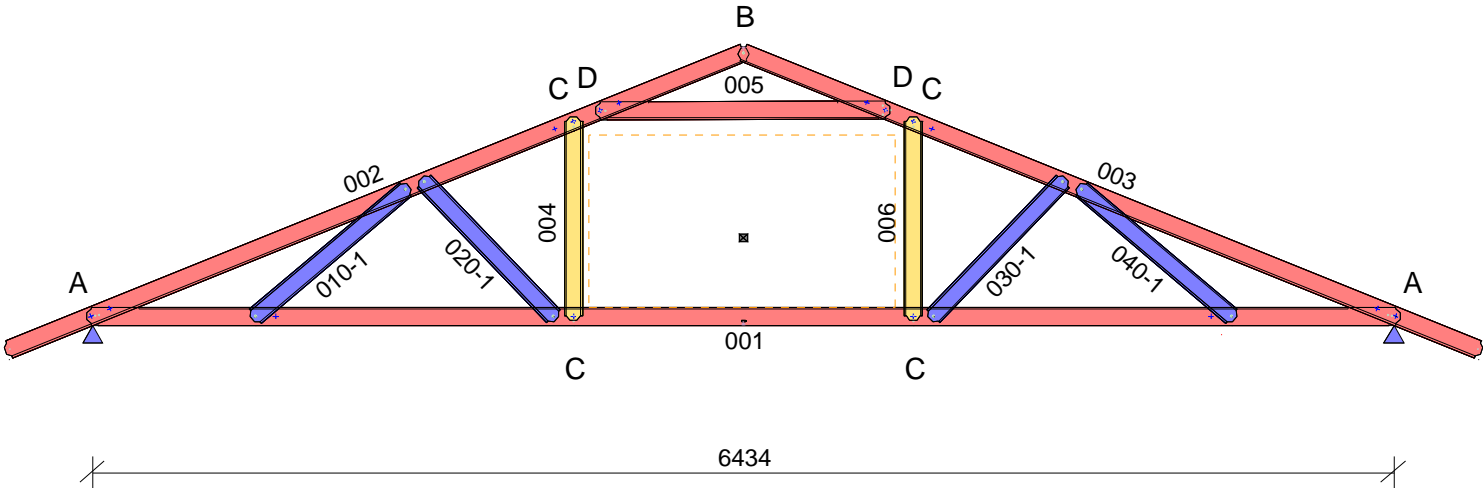
Fastener number:  
Total number of fasteners used in the connection including locating truss screw and reinforcing screws

SC-HEEL-A-75-10-6

Truss system:  
ENDUROTRUSS (c)  
C profile

Connection variant:  
(A is heel with no stiffener)

Channel gauge:  
(75 = 0.75 mm BMT  
10 = 1.0 mm BMT)  
etc



Chords placed flange-DOWN, Webs placed flange-UP.  
Min screws per conn: 1 ( Screw locations diagrammatic only. Refer connection sheet for details.)

PARTS LIST (per truss)										ASSEMBLY DETAILS			TRUSS DETAILS									
DESCRIPTION	No.	LEN	MAT	QTY	DESCRIPTION	No.	LEN	MAT	QTY	APEX HEIGHT	LEFT PITCH	RIGHT PITCH	UNCROPPED LENGTH	UNCROPPED HEIGHT	WEIGHT							
C9075ra	001	6495.5	0.75	1	SCREW-12-14x20-HEX				14	1375	22 deg	22 deg	7334	1566	23.7							
C9075ra	002	3958.8	0.75	1	Precamber = 2.0 mm									DETAILER	DETAILED	SCALE						
C9075ra	003	3958.8	0.75	1										Jarrod			16-07-2019		1:40			
C9075ra	004	1005.9	0.75	1																		
C9075ra	005	1454	0.75	1							JOB NUMBER			TRUSS								
C9075ra	006	1006.2	0.75	1							FABRICATOR:		TRUE STEEL FRAMES		TSF_4262		T012					
C9075ra	010	1014.7	0.75	1							CLIENT REF:		DW2 14 BAKER AVE MORPHETTVILLE		Machine Type		ENDUROTRUSS					
C9075ra	020	964.8	0.75	1							CUSTOMER :		BERT FARINA CONSTRUCTIONS		Page 1 of 1							
C9075ra	030	965.4	0.75	1																		
C9075ra	040	1014.7	0.75	1																		
TRUSSTITE				17																		

Loading: USER-W34N(m,6,-0.1,-0.09,-0.25,0,0,0,0,0,0,-1.1,-1.1,0,900,0,0,0,0,0,600,0,0,A,1,1,1,1,1,,N1,,,,,5000,S,3600,,SEALED,)

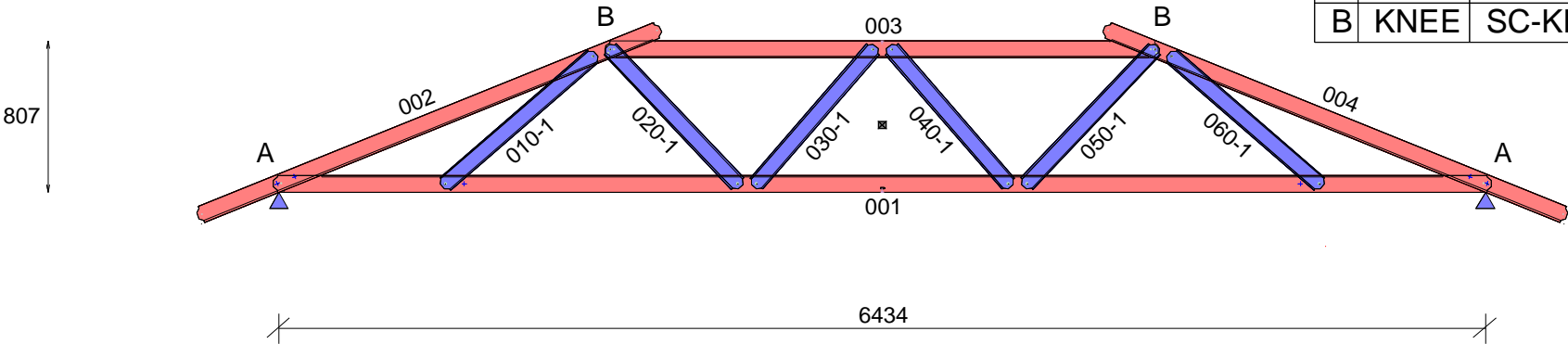
smart: YES flush: NO  
restraint: none

LEFT ← → RIGHT

ANALYSIS		QTY
Status	PASS	1
Approved BY		

Chord - Web Connections	Connection type: (Apex,knee,heel,elbow,chordpt)	Channel depth: Depth of channel -section in mm	Fastener number: Total number of fasteners used in the connection including locating truss screw and reinforcing screws
040-3	SC-HEEL-A-75-10-6		
Part Id Total no. fasteners at each end of the web	Truss system: ENDUROTRUSS (c) C profile	Connection variant: (A is heel with no stiffener)	Channel gauge: (75 = 0.75 mm BMT 10 = 1.0 mm BMT) etc

Connection Table		
A	HEEL	SC-HEEL-A-90-75-2
B	KNEE	SC-KNEE-A-90-75-4



QUALITY CHECK: Top of TOP CHORD to Bottom of BOTTOM CHORD: 806  
Chords placed flange-DOWN, Webs placed flange-UP.  
Min screws per conn: 1 ( Screw locations diagrammatic only. Refer connection sheet for details.)

PARTS LIST (per truss)										ASSEMBLY DETAILS			TRUSS DETAILS						
DESCRIPTION	No.	LEN	MAT	QTY	DESCRIPTION	No.	LEN	MAT	QTY	APEX HEIGHT	LEFT PITCH	RIGHT PITCH	UNCROPPED LENGTH	UNCROPPED HEIGHT	WEIGHT				
C9075ra	001	6495.5	0.75	1	SCREW-12-14x20-HEX				8	N/A	22 deg	22 deg	7334	1080	22.8				
C9075ra	002	2661.2	0.75	1	Precamber = 1.0 mm								DETAILER	DETAILED	SCALE				
C9075ra	003	2947	0.75	1									Jarrold	16-07-2019	1:40				
C9075ra	004	2661.2	0.75	1									JOB NUMBER		TRUSS				
C9075ra	010	1082.4	0.75	1						FABRICATOR:		TRUE STEEL FRAMES	TSF_4262		T013				
C9075ra	020	1031.5	0.75	1						CLIENT REF:		DW2 14 BAKER AVE MORPHETTVILLE	Machine Type						
C9075ra	030	992	0.75	1						CUSTOMER :		BERT FARINA CONSTRUCTIONS				Page 1 of 1			
C9075ra	040	992	0.75	1															
C9075ra	050	1031.5	0.75	1															
C9075ra	060	1082.4	0.75	1															
TRUSSTITE				14															

10.00.08 TRUSS-T013-16-07-2019-13:01:46 TrussBuilder Vers 1.2-17 G3=22

smart: YES flush: NO  
restraint: none

LEFT ← → RIGHT

ANALYSIS		QTY
Status	PASS	1
Approved BY		

Chord - Web Connections

040-3

Part Id  
Total no. fasteners at each end of the web

Connection type: (Apex,knee,heel,elbow,chordpt)

SC-HEEL-A-75-10-6

Truss system: ENDUROTRUSS (c)  
C profile

Channel depth: Depth of channel -section in mm

A-75

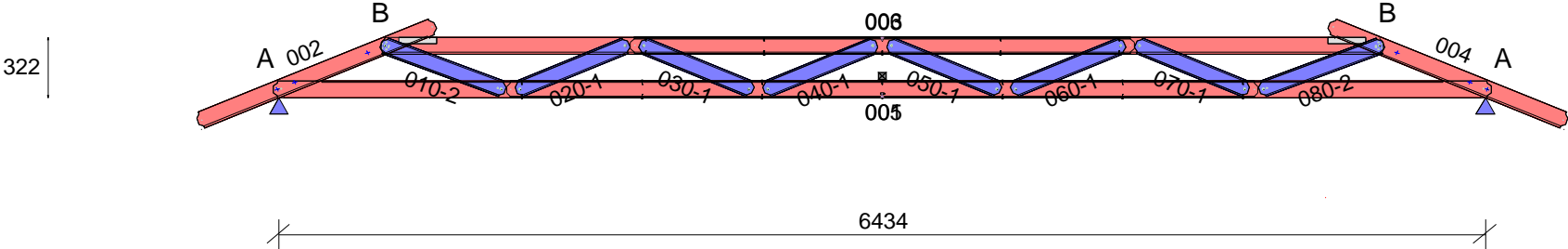
Connection variant: (A is heel with no stiffener)

Fastener number: Total number of fasteners used in the connection including locating truss screw and reinforcing screws

10-6

Channel gauge: (75 = 0.75 mm BMT 10 = 1.0 mm BMT) etc

Connection Table		
A	HEEL	SC-HEEL-A-90-75-2
B	KNEE	SC-KNEE-C-90-75-6



QUALITY CHECK: Top of TOP CHORD to Bottom of BOTTOM CHORD: 317

Chords placed flange-DOWN, Webs placed flange-UP.

Min screws per conn: 1 ( Screw locations diagrammatic only. Refer connection sheet for details.)

PARTS LIST (per truss)										ASSEMBLY DETAILS			TRUSS DETAILS			
DESCRIPTION	No.	LEN	MAT	QTY	DESCRIPTION	No.	LEN	MAT	QTY	APEX HEIGHT	LEFT PITCH	RIGHT PITCH	UNCROPPED LENGTH	UNCROPPED HEIGHT	WEIGHT	
C9075ra	001	6495.5	0.75	1	C9075ra	060	649.3	0.75	1	N/A	22 deg	22 deg	7334	596	29.1	
C9075ra	002	1366.9	0.75	1	C9075ra	070	649.8	0.75	1				Precamber = 5.0 mm	DETAILER	DETAILED	SCALE
C9075ra	003	5347	0.75	1	C9075ra	080	704.6	0.75	1	Jarrold	16-07-2019	1:40				
C9075ra	004	1366.9	0.75	1	TRUSSTITE				18	JOB NUMBER		TRUSS				
C9075ra	005	4008.1	0.75	1	SCREW-12-14x20-HEX				16	TSF_4262		T014				
C9075ra	006	2686.8	0.75	1	SCREW-10-16x16-HEX				24	CLIENT REF:		DW2 14 BAKER AVE MORPHETTVILLE		Machine Type	ENDUROTRUSS	
C9075ra	010	704.6	0.75	1	ANG-35x35x1.0-200				2	CUSTOMER :		BERT FARINA CONSTRUCTIONS				
C9075ra	020	649.8	0.75	1												
C9075ra	030	649.3	0.75	1												
C9075ra	040	649.3	0.75	1												
C9075ra	050	649.3	0.75	1												

Page 1 of 1